



# Essential SmartBright G2 LED Floodlight

## BVP132 LED16/NW 20W 220-240V WB

Essential SmartBright G2 LED floodlight comes with a compact and sturdy design. It is light weight with die-cast aluminum housing and corrosion-proof powder coating, suitable for general outdoor application. High efficiency designed with latest LED technology, achieves substantial energy savings comparing to conventional floodlights.

### Product data

General Information	
Light source color	840 neutral white
Light source replaceable	No
Driver included	Yes
Optical cover/lens type	Polycarbonate bowl/cover flat
Luminaire light beam spread	100°
Control interface	-
Connection	Flying leads/wires
Cable	Cable 0.25m without plug
Protection class IEC	Safety class I
Flammability mark	-
CE mark	CE mark
Light source engine type	LED
Light Technical	
Standard tilt angle posttop	-
Standard tilt angle side entry	-
Operating and Electrical	
Input Voltage	220 to 240 V
Input Frequency	50 to 60 Hz
Power Factor (Min)	0.9
Controls and Dimming	
Dimmable	No
Mechanical and Housing	
Housing Material	Aluminum die cast
Optical cover/lens material	Polycarbonate
Mounting device	Mounting bracket adjustable
Optical cover/lens finish	Textured
Overall length	130 mm
Overall width	116.5 mm
Overall height	28 mm
Color	Black
Approval and Application	
Ingress protection code	IP65 [ Dust penetration-protected, jet-proof]
Mech. impact protection code	IK06 [ 1 J]

## Essential SmartBright G2 LED Floodlight

### Initial Performance (IEC Compliant)

Initial luminous flux (system flux)	1600 lm
Luminous flux tolerance	+/-10%
Initial LED luminaire efficacy	80.00 lm/W
Init. Corr. Color Temperature	4000 K
Init. Color Rendering Index	>80
Initial chromaticity	SDCM <7
Initial input power	20 W
Power consumption tolerance	+/-10%

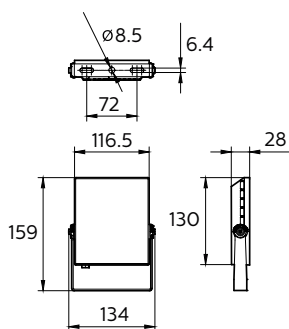
### Application Conditions

Ambient temperature range	-40 to +45 °C
---------------------------	---------------

### Product Data

Full product code	911401859198
Order product name	BVP132 LED16/NW 20W 220-240V WB
EAN/UPC - Product	8710163314341
Order code	911401859198
Numerator - Quantity Per Pack	1
Numerator - Packs per outer box	12
Material Nr. (12NC)	911401859198
Net Weight (Piece)	0.370 kg

### Dimensional drawing



BVP131/132/133/135 LED WB

